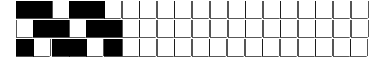


Fili Totali: 4.116 Fili Fondo: 4.056 Cimose: 30 x Parte Pettine: 70,00 / 3,00 H.telaio: 196,00 H.finita: 140

Trame/MT.: a telaio 2.200 Rientro: Contraz.tot: Peso/ml.teor: GG: Div: Finito: Armatura: 60000132

Disposizione Ordito: (0001) Disposizione Trama: (0001) PASSATURA: „CTO SEGUENTE SU 6 LICCI

1 A A 1 117,57 1 A A 1 134,55
 1 1 117,57 1 1 134,55



ORDITO	A	B	C	D	E	F	G	H
CODICE	CATENA	NM 2/69 53 R-POLY 43						
5070	AA	2T0692S0001						
5071	AB	2R0692S0024						
5072	AC	2T0692S0713						
5073	AD	2R0692S0022						
5074	AE	2R0692S0023						
5075	AF	2T0692S0721						
5076	AG	2T0692S0715						
5077	AH	2T0692S0718						
5078	AI	2T0692S0748						
5079	AJ	2T0692S0720						
5080	AK	2R0692S0026						
5081	AL	2R0692S0025						
5082	AM	2T0692S0714						
5083	AN	2T0692S0717						
5084	AO	2T0692S0719						
5085	AP	2T0692S0716						
5086	AQ	2T0692S0733						
5087	AR	2T0692S0712						

TRAMA	A	B	C	D	E	F	G	H
CATENA	VAR.COL.	NM 2/69 53 R-POLY 43						
AA	013	2T0692S0001						
AB	015	2R0692S0024						
AC	017	2T0692S0713						
AD	024	2R0692S0022						
AE	026	2R0692S0023						
AF	036	2T0692S0721						
AG	037	2T0692S0715						
AH	039	2T0692S0718						
AI	054	2T0692S0748						
AQ	055	2T0692S0733						
AR	064	2T0692S0712						
AJ	074	2T0692S0720						
AK	076	2R0692S0026						
AL	077	2R0692S0025						
AM	086	2T0692S0714						
AN	095	2T0692S0717						
AO	102	2T0692S0719						
AP	105	2T0692S0716						

