

Fili Totali: 4.448 Fili Fondo: 4.376 Cimosse: 36 x Parte Pettine: 115,00 / 2,00 H.telaio: 190,26 H.finita: 140

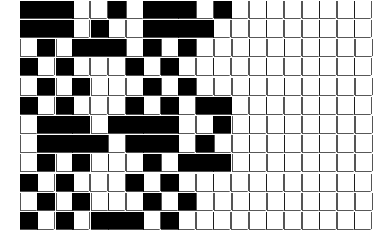
Trame/MT.: a telaio 2.300 Rientro: Contraz.tot: Peso/ml.teor: GG: Div: Finito: Armatura: 12004683

Disposizione Ordito: (6733)

Disposizione Trama: (015431)

PASSATURA: „CVU SEGUENTE SU 12 LICCI

2	A	A	2	42,28	4	B	A	2	45,61
4	B	B	4	84,56	2	A	B	4	91,23
6		6		126,84	6		6		136,84



ORDITO	A	B	C	D	E	F	G	H
CODICE	CATENA	NM 2/69 53 R-POLY 43	NM 2/69 53 R-POLY 43					
2140	AA	2R0692S0025	2T0692S0001					
CODICE	CATENA	CLI R EA 2/70	NM 2/69 53 R-POLY 43					
2141	AB	BORDEAUX EA	2T0692S0781					
CODICE	CATENA	NM 2/69 53 R-POLY 43	CLI R EA 2/70					
2142	AC	2T0692S0718	BORDEAUX EA					
CODICE	CATENA	NM 2/69 53 R-POLY 43	NM 2/69 53 R-POLY 43					
2143	AD	2R0692S0022	2T0692S0340					
2144	AE	2T0692S0712	2R0692S0024					
CODICE	CATENA	CLI R EA 2/70	NM 2/69 53 R-POLY 43					
2145	AF	BAMBAGIA EA	2T0692S0122					
CODICE	CATENA	NM 2/69 53 R-POLY 43	NM 2/69 53 R-POLY 43					
2146	AG	2T0692S0720	2T0692S0418					
2147	AH	2T0692S0716	2T0692S0001					

TRAMA	A	B	C	D	E	F	G	H
CATENA	VAR.COL.	NM 2/69 53 R-POLY 43	NM 2/69 53 R-POLY 43					
AA	001	2R0692S0025	2T0692S0001					
CATENA	VAR.COL.	CLI R EA 2/70	NM 2/69 53 R-POLY 43					
AB	002	BORDEAUX EA	2T0692S0781					
CATENA	VAR.COL.	NM 2/69 53 R-POLY 43	CLI R EA 2/70					
AC	003	2T0692S0718	BORDEAUX EA					
CATENA	VAR.COL.	NM 2/69 53 R-POLY 43	NM 2/69 53 R-POLY 43					
AD	004	2R0692S0022	2T0692S0340					
AE	005	2T0692S0712	2R0692S0024					
CATENA	VAR.COL.	CLI R EA 2/70	NM 2/69 53 R-POLY 43					
AF	006	BAMBAGIA EA	2T0692S0122					
CATENA	VAR.COL.	NM 2/69 53 R-POLY 43	NM 2/69 53 R-POLY 43					
AG	007	2T0692S0720	2T0692S0418					
AH	008	2T0692S0716	2T0692S0001					

