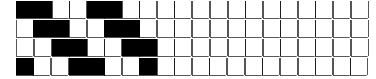


Fili Totali: 4.448 Fili Fondo: 4.376 Cimose: 36 x Parte Pettine: 115,00 / 2,00 H.telaio: 193,39 H.finita: 140

Trame/MT.: a telaio 2.300 Rientro: Contraz.tot: Peso/ml.teor: GG: Div: Finito: Armatura: 8000072

Disposizione Ordito: (0001) Disposizione Trama: (0001) **PASSATURA: „CRV SEGUENTE SU 8 LICCI**

1 A A 1 126,84 1 A A 1 138,93
 1 1 126,84 1 1 138,93



ORDITO	A	B	C	D	E	F	G	H
CODICE	CATENA	NM 2/69 53 R-POLY 43						
0149	AA	2T0692S0340						
0150	AB	2T0692S0559						
0151	AC	2T0692S0732						
0152	AD	2T0692S0001						
0153	AE	2R0692S0024						
0154	AF	2T0692S0731						
0155	AG	2T0692S0713						
0156	AH	2R0692S0022						
0157	AI	2T0692S0752						
0158	AJ	2T0692S0037						
0159	AK	2T0692S0715						
0160	AL	2T0692S0339						
0161	AM	2T0692S0718						
0162	AN	2T0692S0751						
0163	AO	2T0692S0753						
0164	AP	2T0692S0749						
0165	AQ	2T0692S0748						
0166	AR	2T0692S0733						
0167	AS	2T0692S0059						
0168	AT	2T0692S0712						
0169	AU	2T0692S0720						
0170	AV	2R0692S0026						
0171	AW	2R0692S0025						
0172	AX	2T0692S0044						
0173	AY	2T0692S0714						
0174	AZ	2T0692S0418						
0175	BA	2T0692S0717						
0176	BB	2T0692S0750						
0177	BC	2T0692S0734						
0178	BD	2T0692S0719						
0179	BE	2T0692S0716						
0180	BF	2T0692S0279						
0181	BG	2T0692S0323						
0182	BH	2T0692S0149						
0183	BI	2T0692S0333						
0184	BJ	2T0692S0605						
0185	BK	2T0692S0122						
0186	BL	2T0692S0234						
0187	BM	2T0692S0078						

0188	BN	2T0692S0036							
0189	BO	2T0692S0104							
0190	BP	2T0692S0281							
0191	BQ	2T0692S0139							
1197	BR	2T0692S0721							
1656	BS	2T0692S0806							
2048	BT	2T0692S0794							
2049	BU	2R0692S0081							
2359	BV	2T0692S0781							

TRAMA		A	B	C	D	E	F	G	H
CATENA	VAR.COL.	NM 2/69 53 R-POLY 43							
AA	002	2T0692S0340							
AB	003	2T0692S0559							
BT	004	2T0692S0794							
AC	005	2T0692S0732							
AD	013	2T0692S0001							
AE	015	2R0692S0024							
AF	016	2T0692S0731							
AG	017	2T0692S0713							
AH	024	2R0692S0022							
AI	025	2T0692S0752							
AJ	034	2T0692S0037							
AK	037	2T0692S0715							
AL	038	2T0692S0339							
AM	039	2T0692S0718							
AN	045	2T0692S0751							
BU	046	2R0692S0081							
AO	047	2T0692S0753							
AP	049	2T0692S0749							
AQ	054	2T0692S0748							
AR	055	2T0692S0733							
AS	060	2T0692S0059							
AT	064	2T0692S0712							
BV	065	2T0692S0781							
AU	074	2T0692S0720							
AV	076	2R0692S0026							
AW	077	2R0692S0025							
AX	083	2T0692S0044							
AY	086	2T0692S0714							
AZ	087	2T0692S0418							
BA	095	2T0692S0717							
BB	096	2T0692S0750							
BR	100	2T0692S0721							
BC	101	2T0692S0734							
BD	102	2T0692S0719							
BE	105	2T0692S0716							
BF	109	2T0692S0279							
BG	110	2T0692S0323							
BH	111	2T0692S0149							
BI	112	2T0692S0333							
BJ	113	2T0692S0605							
BK	114	2T0692S0122							
BL	115	2T0692S0234							
BM	116	2T0692S0078							
BN	117	2T0692S0036							
BO	118	2T0692S0104							
BP	119	2T0692S0281							
BQ	120	2T0692S0139							
BS	121	2T0692S0806							

