

Fili Totali: 4.448 Fili Fondo: 4.376 Cimose: 36 x Parte Pettine: 115,00 / 2,00 H.telaio: 193,39 H.finita: 140

Trame/MT.: a telaio 2.300 Rientro: Contraz.tot: Peso/ml.teor: GG: Div: Finito: Armatura: 8000072

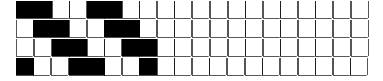
Disposizione Ordito: (014029)

Disposizione Trama: (0001)

PASSATURA: „CRV SEGUENTE SU 8 LICCI

30	A	A	53	120,05	1	A
3	B	B	3	6,80	1	
23	A		56	126,85		
56						

A	1	138,93
	1	138,93



ORDITO	A	B	C	D	E	F	G	H
CODICE	CATENA	NM 2/69 53 R-POLY 43	NM 2/69 53 R-POLY 43					
0456	AA	2T0692S0340	2R0692S0025					
0457	AB	2T0692S0001	2T0692S0340					
0458	AC	2T0692S0752	2E0692S0005					
0459	AD	2R0692S0024	2R0692S0026					
0460	AE	2T0692S0713	2R0692S0024					
0461	AF	2T0692S0605	2T0692S0234					
0462	AG	2T0692S0559	2R0692S0023					
0906	AH	2T0692S0731	2T0692S0340					
0907	AI	2R0692S0024	2T0692S0340					
1534	AL	2R0692S0025	2T0692S0001					
1735	AM	2T0692S0752	2T0692S0712					
1736	AN	2T0692S0122	2T0692S0340					
1737	AO	2R0692S0025	2R0692S0023					
1738	AP	2T0692S0559	2R0692S0025					
1739	AR	2T0692S0418	2T0692S0720					
1740	AS	2T0692S0716	2T0692S0731					
1741	AT	2T0692S0078	2T0692S0001					
1742	AU	2R0692S0024	2T0692S0734					
1743	AV	2T0692S0122	2T0692S0339					

TRAMA	A	B	C	D	E	F	G	H
CATENA	VAR.COL.	NM 2/69 53 R-POLY 43						
AA	001	2T0692S0340						
AB	004	2T0692S0001						
AH	005	2T0692S0731						
AN	006	2T0692S0122						
AC	007	2T0692S0752						
AI	008	2R0692S0024						
AD	010	2R0692S0024						
AE	018	2T0692S0713						
AF	019	2T0692S0605						
AG	020	2T0692S0559						
AO	023	2R0692S0025						
AP	024	2T0692S0559						
AR	025	2T0692S0418						
AL	033	2R0692S0025						
AM	034	2T0692S0752						
AS	035	2T0692S0716						
AT	036	2T0692S0078						
AU	037	2R0692S0024						
AV	038	2T0692S0122						

