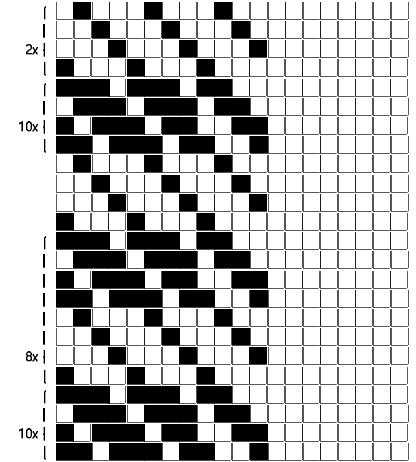


Fili Totali: 4.448 Fili Fondo: 4.376 Cimosse: 36 x Parte Pettine: 115,00 / 2,00 H.telaio: 193,39 H.finita: 140

Trame/MT.: a telaio 2.300 Rientro: Contraz.tot: Peso/ml.teor: GG: Div: Finito: Armatura: 12004661

Disposizione Ordito: (021091) Disposizione Trama: (021090) PASSATURA: „CUB TOT. 156 FILI A CORPI SU 12 LICCI

8	E	A	40	32,52	1	A	x 20	A	40	35,62
1	A	B	40	32,52	1	B		B	40	35,62
1	B	C	36	29,27	4	C	x 4	C	36	32,06
4	C	D	32	26,02	4	D		D	32	28,50
4	D	E	8	6,50	4	C		E	8	7,12
4	C		156	126,83	4	D	x 4		156	138,92
4	D				4	C				
4	C				1	A	x 20			
1	A				1	B				
1	B				8	E				
156					156					



ORDITO		A	B	C	D	E	F	G	H
CODICE	CATENA	NM 2/69 53 R-POLY 43	NM 2/69 53 R-POLY 43	NM 2/69 53 R-POLY 43	NM 2/69 53 R-POLY 43	NM 2/69 53 R-POLY 43			
0442	AA	2R0692S0026	2T0692S0001	2T0692S0001	2E0692S0005	2T0692S0078			

TRAMA		A	B	C	D	E	F	G	H
CATENA	VAR.COL.	NM 2/69 53 R-POLY 43	NM 2/69 53 R-POLY 43	NM 2/69 53 R-POLY 43	NM 2/69 53 R-POLY 43	NM 2/69 53 R-POLY 43			
AA	001	2R0692S0026	2T0692S0001	2T0692S0001	2E0692S0005	2T0692S0078			

