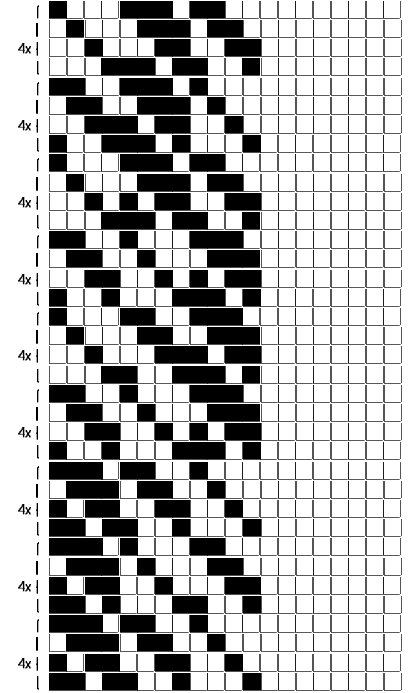


Fili Totali: 4.448 Fili Fondo: 4.376 Cimose: 36 x Parte Pettine: 115,00 / 2,00 H.telaio: 190,26 H.finita: 140

Trame/MT.: a telaio 2.300 Rientro: Contraz.tot: Peso/ml.teor: GG: Div: Finito: Armatura: 12004666

Disposizione Ordito: ( 0001 ) Disposizione Trama: ( 0001 ) PASSATURA: „CUH TOT. 48 FILI SU 12 LICCI A CORPI

1 A 1 126,84 1 A A 1 136,84  
 1 1 126,84 1 1 136,84



| ORDITO | A      | B                    | C | D | E | F | G | H |
|--------|--------|----------------------|---|---|---|---|---|---|
| CODICE | CATENA | NM 2/69 53 R-POLY 43 |   |   |   |   |   |   |
| 0494   | AA     | 2T0692S0279          |   |   |   |   |   |   |
| 0495   | AB     | 2T0692S0605          |   |   |   |   |   |   |
| 0496   | AC     | 2R0692S0026          |   |   |   |   |   |   |
| 0497   | AD     | 2T0692S0719          |   |   |   |   |   |   |
| 0498   | AE     | 2T0692S0104          |   |   |   |   |   |   |
| 0499   | AF     | 2R0692S0024          |   |   |   |   |   |   |

| TRAMA  | A        | B                    | C | D | E | F | G | H |
|--------|----------|----------------------|---|---|---|---|---|---|
| CATENA | VAR.COL. | NM 2/69 53 R-POLY 43 |   |   |   |   |   |   |
| AA     | 001      | 2T0692S0001          |   |   |   |   |   |   |
| AB     | 002      | 2T0692S0122          |   |   |   |   |   |   |
| AB     | 003      | 2T0692S0751          |   |   |   |   |   |   |
| AC     | 004      | 2T0692S0340          |   |   |   |   |   |   |
| AD     | 005      | 2T0692S0234          |   |   |   |   |   |   |
| AE     | 006      | 2T0692S0122          |   |   |   |   |   |   |
| AF     | 007      | 2T0692S0001          |   |   |   |   |   |   |

