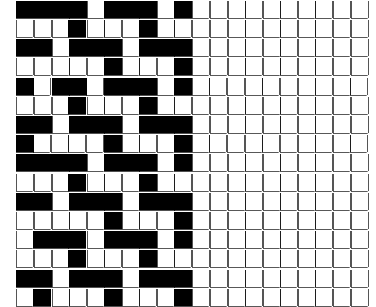


Fili Totali: 6.840 Fili Fondo: 6.720 Cimose: 60 x Parte Pettine: 80,00 / 4,50 H.telaio: 190,00 H.finita:

Trame/MT.: a telaio 2.900 Rientro: Contraz.tot: Peso/ml.teor: GG: Div: Finito: Armatura: 10000735

Disposizione Ordito: (0001) Disposizione Trama: (0001) **PASSATURA: „CTZ TOT. 18 FILI SALTUARI SU 10 LICCI**

1 A A 1 173,22 1 A A 1 172,32



ORDITO	A	B	C	D	E	F	G	H
CODICE	CATENA	NM 2/69 53 R-POLY 43						
0360	AA	2T0692S0078						
0323	AB	2T0692S0559						
0324	AC	2T0692S0732						
0325	AD	2T0692S0001						
0326	AE	2R0692S0024						
0327	AF	2T0692S0731						
0328	AG	2T0692S0713						
0329	AH	2R0692S0022						
0330	AI	2T0692S0752						
0331	AJ	2T0692S0037						
0332	AK	2T0692S0715						
0333	AL	2T0692S0339						
0334	AM	2T0692S0718						
0335	AN	2T0692S0751						
0336	AO	2T0692S0753						
0337	AP	2T0692S0749						
0338	AQ	2T0692S0748						
0339	AR	2T0692S0733						
0340	AS	2T0692S0059						
0341	AT	2T0692S0712						
0342	AU	2T0692S0720						
0343	AV	2R0692S0026						
0344	AW	2R0692S0025						
0345	AX	2T0692S0044						
0346	AY	2T0692S0714						
0347	AZ	2T0692S0418						
0348	BA	2T0692S0717						
0349	BB	2T0692S0750						
0350	BC	2T0692S0734						
0351	BD	2T0692S0719						
0352	BE	2T0692S0716						

DISEGNATORE: FRANCO/GIOVANNI DESCR.: 2/69 53 R-PET 43 WOOL 4 LYCRA - UNITO

ARTICOLO/DISEGNO: 74.3217/D.531

DATA: 21-03-2022

STG: 74 DONNA/GARDENING T

0353	BF	2T0692S0279							
0354	BG	2T0692S0323							
0355	BH	2T0692S0149							
0356	BI	2T0692S0333							
0357	BJ	2T0692S0605							
0358	BK	2T0692S0122							
0359	BL	2T0692S0234							
0360	AA	2T0692S0078							
0361	BN	2T0692S0036							
0362	BO	2T0692S0104							
0363	BP	2T0692S0281							
0364	BQ	2T0692S0139							

TRAMA		A	B	C	D	E	F	G	H
CATENA	VAR.COL.	NM 2/69 53 R-POLY 43							
AA	002	2T0692S0340							
AB	003	2T0692S0559							
AC	005	2T0692S0732							
AD	013	2T0692S0001							
AE	015	2R0692S0024							
AF	016	2T0692S0731							
AG	017	2T0692S0713							
AH	024	2R0692S0022							
AI	025	2T0692S0752							
AJ	034	2T0692S0037							
AK	037	2T0692S0715							
AL	038	2T0692S0339							
AM	039	2T0692S0718							
AN	045	2T0692S0751							
AO	047	2T0692S0753							
AP	049	2T0692S0749							
AQ	054	2T0692S0748							
AR	055	2T0692S0733							
AS	060	2T0692S0059							
AT	064	2T0692S0712							
AU	074	2T0692S0720							
AV	076	2R0692S0026							
AW	077	2R0692S0025							
AX	083	2T0692S0044							
AY	086	2T0692S0714							
AZ	087	2T0692S0418							
BA	095	2T0692S0717							
BB	096	2T0692S0750							
BC	101	2T0692S0734							
BD	102	2T0692S0719							
BE	105	2T0692S0716							
BF	109	2T0692S0279							
BG	110	2T0692S0323							
BH	111	2T0692S0149							
BI	112	2T0692S0333							
BJ	113	2T0692S0605							
BK	114	2T0692S0122							
BL	115	2T0692S0234							
AA	116	2T0692S0078							
BN	117	2T0692S0036							
BO	118	2T0692S0104							
BP	119	2T0692S0281							
BQ	120	2T0692S0139							

