

Fili Totali: 4.116 Fili Fondo: 4.056 Cimose: 30 x Parte Pettine: 70,00 / 3,00 H.telaio: 196,00 H.finita: 140

Trame/MT.: a telaio 2.200 Rientro: Contraz.tot: Peso/ml.teor: GG: Div: Finito: Armatura: 6000081

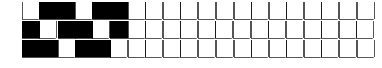
Disposizione Ordito: (019412)

Disposizione Trama: (018079)

PASSATURA: „CTO SEGUENTE SU 6 LICCI

1	A	A	102	58,78
2	F	B	51	29,39
6	A	C	2	1,15
6	B	D	1	0,58
6	A	E	4	2,31
6	F	F	44	25,36
6	A		204	117,57
4	B			
2	E			
3	A x 4			
3	B			
3	A			
3	F			
3	A			
2	B			
1	A			
2	F			
1	A			
1	C			
1	D			
1	C			
1	A			
2	F			
1	A			
2	B			
3	A x 4			
3	F			
3	A			
3	B			
3	A			
2	E			
4	B			
6	A			
6	F			
6	A			
6	B			
6	A			
2	F			
4	A			
3	B			
3	A			
204				

1	A	A	102	67,28
2	B	B	51	33,64
3	A x 4	C	2	1,32
3	F	D	1	0,66
3	A	E	4	2,64
3	B	F	44	29,02
3	A		204	134,56
2	E			
4	B			
6	A			
6	F			
6	A			
6	B			
6	A			
2	F			
4	A			
3	B			
4	A			
2	F			
6	A			
6	B			
6	A			
6	F			
6	A			
4	B			
2	E			
3	A x 4			
3	B			
3	A			
3	F			
3	A			
2	B			
1	A			
2	F			
1	A			
1	C			
1	D			
1	C			
1	A			
2	F			
204				



ORDITO		A	B	C	D	E	F	G	H
CODICE	CATENA	NM 2/69 53 R-POLY 43	NM 2/69 53 R-POLY 43	NM 2/69 53 R-POLY 43	NM 2/69 53 R-POLY 43	NM 2/69 53 R-POLY 43	NM 2/69 53 R-POLY 43		
0530	AA	2T0692S0340	2R0692S0024	2T0692S0234	2T0692S0751	2T0692S0418	2T0692S0001		
2435	AB	2T0692S0340	2R0692S0024	2R0692S0081	2T0692S0751	2T0692S0418	2T0692S0001		

TRAMA		A	B	C	D	E	F	G	H
CATENA	VAR.COL.	NM 2/69 53 R-POLY 43	NM 2/69 53 R-POLY 43	NM 2/69 53 R-POLY 43	NM 2/69 53 R-POLY 43	NM 2/69 53 R-POLY 43	NM 2/69 53 R-POLY 43		
AA	004	2T0692S0340	2R0692S0024	2T0692S0234	2T0692S0751	2T0692S0418	2T0692S0001		
AB	006	2T0692S0340	2R0692S0024	2R0692S0081	2T0692S0751	2T0692S0418	2T0692S0001		

