

DISEGNATORE: FRANCO/GIOVANNI DESCR.: 2/69 53 R-PET 43 WOOL 4 LYCRA

ARTICOLO/DISEGNO: 74.3554/D.353

DATA: 19-07-2022 STG: 74 DONNA/GARDENING T

Fili Totali: 5.592 Fili Fondo: 5.472 Cimose: 60 x Parte Pettine: 72,50 / 4,00 H.telaio: 188,69 H.finita: 140

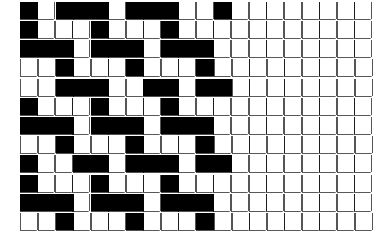
Trame/MT.: a telaio 2.900 Rientro: Contraz.tot: Peso/ml.teor: GG: Div: Finito: Armatura: 12004658

Disposizione Ordito: (0001)

Disposizione Trama: (0001)

PASSATURA: „BQQ SEGUENTE SU 12 LICCI

1 A A 1 158,61 1 A A 1 171,22
 1 1 158,61 1 171,22



ORDITO	A	B	C	D	E	F	G	H
CODICE	CATENA	NM 2/69 53 R-POLY 43						
1817	AA	2T0692S0340						
1818	AB	2T0692S0559						
1819	AC	2T0692S0732						
1820	AD	2T0692S0001						
1821	AE	2R0692S0024						
1822	AF	2T0692S0731						
1823	AG	2T0692S0713						
1824	AH	2R0692S0022						
1825	AI	2T0692S0752						
1826	AJ	2T0692S0037						
1827	AK	2T0692S0715						
1828	AL	2T0692S0339						
1829	AM	2T0692S0718						
1830	AN	2T0692S0751						
1831	AO	2T0692S0753						
1832	AP	2T0692S0749						
1833	AQ	2T0692S0748						
1834	AR	2T0692S0733						
1835	AS	2T0692S0059						
1836	AT	2T0692S0712						
1837	AU	2T0692S0720						
1838	AV	2R0692S0026						
1839	AW	2R0692S0025						
1840	AX	2T0692S0044						
1841	AY	2T0692S0714						
1842	AZ	2T0692S0418						
1843	BA	2T0692S0717						
1844	BB	2T0692S0750						
1845	BC	2T0692S0734						
1846	BD	2T0692S0719						
1847	BE	2T0692S0716						
1848	BF	2T0692S0279						
1849	BG	2T0692S0323						
1850	BH	2T0692S0149						
1851	BI	2T0692S0333						

DISEGNATORE: FRANCO/GIOVANNI DESCR.: 2/69 53 R-PET 43 WOOL 4 LYCRA

ARTICOLO/DISEGNO: 74.3554/D.353

DATA: 19-07-2022

STG: 74 DONNA/GARDENING T

1852	BJ	2T0692S0605							
1853	BK	2T0692S0122							
1854	BL	2T0692S0234							
1855	BM	2T0692S0078							
1856	BN	2T0692S0036							
1857	BO	2T0692S0104							
1858	BP	2T0692S0281							
1859	BQ	2T0692S0139							

TRAMA		A	B	C	D	E	F	G	H
CATENA	VAR.COL.	NM 2/69 53 R-POLY 43							
AA	002	2T0692S0340							
AB	003	2T0692S0559							
AC	005	2T0692S0732							
AD	013	2T0692S0001							
AE	015	2R0692S0024							
AF	016	2T0692S0731							
AG	017	2T0692S0713							
AH	024	2R0692S0022							
AI	025	2T0692S0752							
AJ	034	2T0692S0037							
AK	037	2T0692S0715							
AL	038	2T0692S0339							
AM	039	2T0692S0718							
AN	045	2T0692S0751							
AO	047	2T0692S0753							
AP	049	2T0692S0749							
AQ	054	2T0692S0748							
AR	055	2T0692S0733							
AS	060	2T0692S0059							
AT	064	2T0692S0712							
AU	074	2T0692S0720							
AV	076	2R0692S0026							
AW	077	2R0692S0025							
AX	083	2T0692S0044							
AY	086	2T0692S0714							
AZ	087	2T0692S0418							
BA	095	2T0692S0717							
BB	096	2T0692S0750							
BC	101	2T0692S0734							
BD	102	2T0692S0719							
BE	105	2T0692S0716							
BF	109	2T0692S0279							
BG	110	2T0692S0323							
BH	111	2T0692S0149							
BI	112	2T0692S0333							
BJ	113	2T0692S0605							
BK	114	2T0692S0122							
BL	115	2T0692S0234							
BM	116	2T0692S0078							
BN	117	2T0692S0036							
BO	118	2T0692S0104							
BP	119	2T0692S0281							
BQ	120	2T0692S0139							

