

Fili Totali: 4.448 Fili Fondo: 4.376 Cimosse: 36 x Parte Pettine: 115,00 / 2,00 H.telaio: 193,39 H.finita: 140

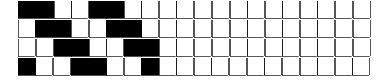
Trame/MT.: a telaio 2.300 Rientro: Contraz.tot: Peso/ml.teor: GG: Div: Finito: Armatura: 80000072

Disposizione Ordito: (014024)

Disposizione Trama: (014024)

PASSATURA: „CRV SEGUENTE SU 8 LICCI

6	A	A	18	63,42	6	A	A	18	69,46
6	D	B	6	21,14	6	D	B	6	23,15
6	A	C	6	21,14	6	A	C	6	23,15
6	B	D	6	21,14	6	B	D	6	23,15
6	A		36	126,84	6	A	36	138,91	
6	C				6	C			
36					36				



ORDITO	A	B	C	D	E	F	G	H
CODICE	CATENA	NM 2/69 53 R-POLY 43	NM 2/69 53 R-POLY 43	NM 2/69 53 R-POLY 43	NM 2/69 53 R-POLY 43			
1125	AA	2T0692S0605	2T0692S0750	2T0692S0763	2T0692S0751			
1126	AB	2R0692S0024	2T0692S0763	2T0692S0605	2T0692S0717			
1127	AC	2T0692S0751	2T0692S0001	2T0692S0717	2T0692S0712			
1130	AD	2T0692S0752	2T0692S0001	2E0692S0005	2R0692S0023			
1128	AE	2T0692S0715	2T0692S0718	2T0692S0078	2T0692S0719			
1129	AF	2R0692S0024	2T0692S0763	2R0692S0023	2T0692S0752			

TRAMA	A	B	C	D	E	F	G	H
CATENA	VAR.COL.	NM 2/69 53 R-POLY 43	NM 2/69 53 R-POLY 43	NM 2/69 53 R-POLY 43	NM 2/69 53 R-POLY 43			
AA	002	2T0692S0605	2T0692S0750	2T0692S0763	2T0692S0751			
AB	003	2R0692S0024	2T0692S0763	2T0692S0605	2T0692S0717			
AC	005	2T0692S0751	2T0692S0001	2T0692S0717	2T0692S0712			
AE	007	2T0692S0715	2T0692S0718	2T0692S0078	2T0692S0719			
AF	011	2R0692S0024	2T0692S0763	2R0692S0023	2T0692S0752			
AD	012	2T0692S0752	2T0692S0001	2E0692S0005	2R0692S0023			

