

Fili Totali: 4.448 Fili Fondo: 4.376 Cimosse: 36 x Parte Pettine: 115,00 / 2,00 H.telaio: 193,39 H.finita: 140

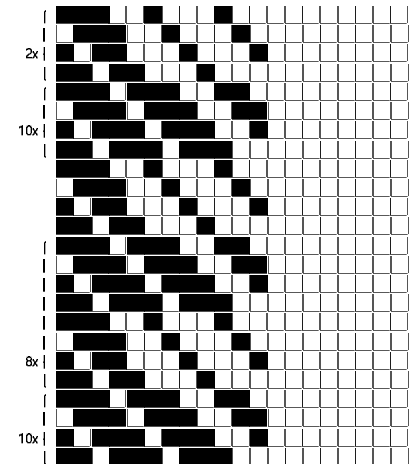
Trame/MT.: a telaio 2.300 Rientro: Contraz.tot: Peso/ml.teor: GG: Div: Finito: Armatura: 12004663

Disposizione Ordito: ( 021100 )

Disposizione Trama: ( 021099 )

PASSATURA: „CUB TOT. 156 FILI A CORPI SU 12 LICCI

8	E	A	40	32,52	1	A	x 5	A	40	35,62
1	A	B	20	16,26	2	B		B	20	17,81
2	B	C	20	16,26	2	A		C	20	17,81
2	A	D	32	26,02	2	F		D	32	28,50
2	F	E	8	6,50	1	A		E	8	7,12
1	A	F	36	29,27	4	C	x 2	F	36	32,06
4	C		156	126,83	4	D			156	138,92
4	D				4	F				
4	F				4	D				
4	D				4	C				
4	C				4	D	x 2			
4	D				4	F				
4	F				4	D				
4	D				4	C				
4	C				1	A	x 5			
1	A				2	B				
2	B				2	A				
2	A				2	F				
2	F				1	A				
1	A				8	E				
156					156					



ORDITO	A	B	C	D	E	F	G	H	
CODICE	CATENA	NM 2/69 53 R-POLY 43	NM 2/69 53 R-POLY 43	NM 2/69 53 R-POLY 43	NM 2/69 53 R-POLY 43	NM 2/69 53 R-POLY 43	NM 2/69 53 R-POLY 43		
1138	AA	2T0692S0712	2T0692S0001	2T0692S0122	2T0692S0712	2T0692S0719	2T0692S0751		
2621	AB	2E0692S0005	2T0692S0001	2T0692S0001	2E0692S0005	2T0692S0328	2T0692S0210		
2622	AC	2E0692S0005	2T0692S0001	2T0692S0001	2E0692S0005	2T0692S0037	2T0692S0751		
2638	AD	2R0692S0024	2T0692S0210	2T0692S0210	2R0692S0024	2R0692S0024	2T0692S0328		

TRAMA	A	B	C	D	E	F	G	H	
CATENA	VAR.COL.	NM 2/69 53 R-POLY 43	NM 2/69 53 R-POLY 43	NM 2/69 53 R-POLY 43	NM 2/69 53 R-POLY 43	NM 2/69 53 R-POLY 43	NM 2/69 53 R-POLY 43		
AA	001	2T0692S0712	2T0692S0001	2T0692S0122	2T0692S0712	2T0692S0719	2T0692S0751		
AB	002	2E0692S0005	2T0692S0001	2T0692S0001	2E0692S0005	2T0692S0328	2T0692S0210		
AC	003	2E0692S0005	2T0692S0001	2T0692S0001	2E0692S0005	2T0692S0037	2T0692S0751		
AD	004	2R0692S0024	2T0692S0210	2T0692S0210	2R0692S0024	2R0692S0024	2T0692S0328		

