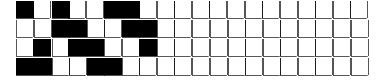


Fili Totali: 4.448 Fili Fondo: 4.376 Cimosse: 36 x Parte Pettine: 115,00 / 2,00 H.telaio: 190,26 H.finita: 140

Trame/MT.: a telaio 2.300 Rientro: Contraz.tot: Peso/ml.teor: GG: Div: Finito: Armatura: 80003275

Disposizione Ordito: (021806) Disposizione Trama: (0002) **PASSATURA: „CXI TOT. 132 FILI SU 8 LICCI A CORPI**

1 A x 20	A 66 63,42	1 A	A 1 68,42
1 B	B 64 61,50	1 B	B 1 68,42
1 A x 2	C 2 1,92	2	2 136,84
1 C	132 126,84		
1 A x 44			
1 B			
132			



ORDITO	A	B	C	D	E	F	G	H
CODICE	CATENA	NM 2/69 53 R-POLY 43	NM 2/69 53 R-POLY 43	NM 2/69 53 R-POLY 43				
0591	AA	2R0692S0025	2T0692S0001	2T0692S0234				
0592	AB	2T0692S0748	2T0692S0122	2T0692S0323				
0593	AC	2T0692S0340	2T0692S0001	2T0692S0037				
0594	AD	2R0692S0022	2T0692S0122	2R0692S0081				
0595	AE	2T0692S0104	2T0692S0001	2R0692S0067				

TRAMA	A	B	C	D	E	F	G	H
CATENA	VAR.COL.	NM 2/69 53 R-POLY 43	NM 2/69 53 R-POLY 43					
AA	001	2R0692S0025	2T0692S0001					
AB	002	2T0692S0748	2T0692S0122					
AC	003	2T0692S0340	2T0692S0001					
AD	004	2R0692S0022	2T0692S0122					
AE	005	2T0692S0104	2T0692S0001					

PASSATURA: „CXI

TOT. 132 FILI SU 8 LICCI A CORPI

	1	2	3	4	5	6	7	8	9	10	11	12	13	14	15	16	17	18	19	20	21	22	23	24	
20																									
19																									
18																									
17																									
16																									
15																									
14																									
13																									
12																									
11																									
10																									
9																									
8			1				1			1			1								1				
7			2			2			2			2			2					2			2		
6	3				3							3			3					3				3	
5	4			4								4			4					4			4		
4																				5					
3																				6					
2							7																		
1								8																	

<- -x 2- -> <- -x 8- -> <- -x 8- -> <- -x 8- -> <- -x 6- ->