

Fili Totali: 4.116 Fili Fondo: 4.056 Cimose: 30 x Parte Pettine: 70,00 / 3,00 H.telaio: 196,00 H.finita: 140

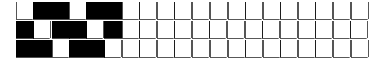
Trame/MT.: a telaio 2.200 Rientro: Contraz.tot: Peso/ml.teor: GG: Div: Finito: Armatura: 60000081

Disposizione Ordito: ( 017790 )

Disposizione Trama: ( 0001 )

PASSATURA: „CTO SEGUENTE SU 6 LICCI

|    |   |   |    |        |   |   |   |   |        |
|----|---|---|----|--------|---|---|---|---|--------|
| 27 | A | A | 27 | 105,81 | 1 | A | A | 1 | 134,55 |
| 3  | B | B | 3  | 11,76  | 1 |   |   | 1 | 134,55 |
| 30 |   |   | 30 | 117,57 |   |   |   |   |        |



| ORDITO | A      | B                    | C                    | D | E | F | G | H |
|--------|--------|----------------------|----------------------|---|---|---|---|---|
| CODICE | CATENA | NM 2/69 53 R-POLY 43 | NM 2/69 53 R-POLY 43 |   |   |   |   |   |
| 0499   | AA     | 2T0692S0340          | 2R0692S0025          |   |   |   |   |   |
| 0500   | AB     | 2T0692S0001          | 2T0692S0340          |   |   |   |   |   |
| 0501   | AC     | 2T0692S0731          | 2T0692S0340          |   |   |   |   |   |
| 0502   | AD     | 2T0692S0122          | 2T0692S0340          |   |   |   |   |   |
| 0503   | AE     | 2T0692S0752          | 2E0692S0005          |   |   |   |   |   |
| 0504   | AF     | 2R0692S0024          | 2R0692S0026          |   |   |   |   |   |
| 0505   | AG     | 2T0692S0713          | 2R0692S0024          |   |   |   |   |   |
| 0506   | AH     | 2T0692S0605          | 2T0692S0234          |   |   |   |   |   |
| 0507   | AI     | 2T0692S0559          | 2R0692S0023          |   |   |   |   |   |
| 0510   | AJ     | 2T0692S0418          | 2T0692S0720          |   |   |   |   |   |
| 0511   | AK     | 2R0692S0025          | 2T0692S0001          |   |   |   |   |   |
| 0512   | AL     | 2T0692S0752          | 2T0692S0712          |   |   |   |   |   |
| 0508   | AM     | 2R0692S0025          | 2R0692S0023          |   |   |   |   |   |
| 0509   | AN     | 2T0692S0559          | 2R0692S0025          |   |   |   |   |   |
| 0513   | AP     | 2T0692S0716          | 2T0692S0731          |   |   |   |   |   |
| 0514   | AR     | 2T0692S0078          | 2T0692S0001          |   |   |   |   |   |
| 0515   | AS     | 2R0692S0024          | 2T0692S0734          |   |   |   |   |   |
| 0516   | AT     | 2T0692S0122          | 2T0692S0339          |   |   |   |   |   |
| 1925   | AZ     | 2R0692S0024          | 2T0692S0340          |   |   |   |   |   |

| TRAMA  | A        | B                    | C | D | E | F | G | H |
|--------|----------|----------------------|---|---|---|---|---|---|
| CATENA | VAR.COL. | NM 2/69 53 R-POLY 43 |   |   |   |   |   |   |
| AA     | 001      | 2T0692S0340          |   |   |   |   |   |   |
| AB     | 004      | 2T0692S0001          |   |   |   |   |   |   |
| AC     | 005      | 2T0692S0731          |   |   |   |   |   |   |
| AD     | 006      | 2T0692S0122          |   |   |   |   |   |   |
| AE     | 007      | 2T0692S0752          |   |   |   |   |   |   |
| AZ     | 008      | 2R0692S0024          |   |   |   |   |   |   |
| AF     | 010      | 2R0692S0024          |   |   |   |   |   |   |
| AG     | 018      | 2T0692S0713          |   |   |   |   |   |   |
| AH     | 019      | 2T0692S0605          |   |   |   |   |   |   |
| AI     | 020      | 2T0692S0559          |   |   |   |   |   |   |
| AM     | 023      | 2R0692S0025          |   |   |   |   |   |   |
| AN     | 024      | 2T0692S0559          |   |   |   |   |   |   |
| AJ     | 025      | 2T0692S0418          |   |   |   |   |   |   |
| AK     | 033      | 2R0692S0025          |   |   |   |   |   |   |
| AL     | 034      | 2T0692S0752          |   |   |   |   |   |   |
| AP     | 035      | 2T0692S0716          |   |   |   |   |   |   |
| AR     | 036      | 2T0692S0078          |   |   |   |   |   |   |
| AS     | 037      | 2R0692S0024          |   |   |   |   |   |   |
| AT     | 038      | 2T0692S0122          |   |   |   |   |   |   |

