

DISEGNATORE: FRANCO/GIOVANNI DESCR.: 2/69 53 R-PET 43 WOOL 4 LYCRA

ARTICOLO/DISEGNO: 76.3672/D.550

DATA: 06-04-2023

STG: 76 DONNA/GARDENING T

Fili Totali: 8.800 Fili Fondo: 8.668 Cimose: 66 x Parte Pettine: 110,00 / 4,00 H.telaio: 197,00 H.finita:

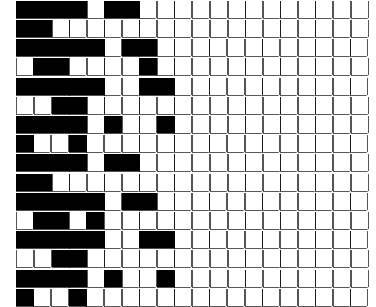
Trame/MT.: a telaio 4.200 Rientro: Contraz.tot: Peso/ml.teor: GG: Div: Finito: Armatura: 9000012

Disposizione Ordito: (0001)

Disposizione Trama: (0001)

PASSATURA: „CXE TOT. 18 FILI SU 9 LICCI SALTUARIO

1 A A 1 251,25 1 A A 1 258,09
1 1 251,25 1 1 258,09



ORDITO	A	B	C	D	E	F	G	H
CODICE	CATENA	NM 2/69 53 R-POLY 43						
0223	AA	2T0692S0340						
0224	AB	2T0692S0559						
0225	AC	2T0692S0794						
0226	AD	2T0692S0732						
0227	AE	2T0692S0001						
0228	AF	2R0692S0024						
0229	AG	2T0692S0731						
0230	AH	2T0692S0713						
0231	AI	2R0692S0022						
0232	AJ	2T0692S0752						
0233	AK	2T0692S0037						
0234	AL	2T0692S0715						
0235	AM	2T0692S0339						
0236	AN	2T0692S0718						
0237	AO	2T0692S0751						
0238	AP	2R0692S0081						
0239	AQ	2T0692S0753						
0240	AR	2T0692S0749						
0241	AS	2T0692S0748						
0242	AT	2T0692S0733						
0243	AU	2T0692S0059						
0244	AV	2T0692S0712						
0245	AW	2T0692S0720						
0246	AX	2R0692S0026						
0247	AY	2R0692S0025						
0248	AZ	2T0692S0044						
0249	BA	2T0692S0714						
0250	BB	2T0692S0418						
0251	BC	2T0692S0717						
0252	BD	2T0692S0750						
0253	BE	2T0692S0721						

NOTE ARTICOLO:

C/C ART. 3132/D.333 - PER TINTO PEZZA VEDI ART. 76. 2428/Q.000 - VALERON MODIFICATO - ANNULLATO FRANCO 22/05

NOTE FINISSAGGIO:

BISTRETCH

DISEGNATORE: FRANCO/GIOVANNI DESCR.: 2/69 53 R-PET 43 WOOL 4 LYCRA

ARTICOLO/DISEGNO: 76.3672/D.550

DATA: 06-04-2023

STG: 76 DONNA/GARDENING T

0254	BF	2T0692S0734							
0255	BG	2T0692S0719							
0256	BH	2T0692S0716							
0257	BI	2T0692S0279							
0258	BJ	2T0692S0323							
0259	BK	2T0692S0149							
0260	BL	2T0692S0333							
0261	BM	2T0692S0605							
0262	BN	2T0692S0122							
0263	BO	2T0692S0234							
0264	BP	2T0692S0078							
0265	BQ	2T0692S0036							
0266	BR	2T0692S0104							
0267	BS	2T0692S0281							
0268	BT	2T0692S0139							
0269	BU	2T0692S0806							

TRAMA		A	B	C	D	E	F	G	H
CATENA	VAR.COL.	NM 2/69 53 R-POLY 43							
AA	002	2T0692S0340							
AB	003	2T0692S0559							
AC	004	2T0692S0794							
AD	005	2T0692S0732							
AE	013	2T0692S0001							
AF	015	2R0692S0024							
AG	016	2T0692S0731							
AH	017	2T0692S0713							
AI	024	2R0692S0022							
AJ	025	2T0692S0752							
AK	034	2T0692S0037							
AL	037	2T0692S0715							
AM	038	2T0692S0339							
AN	039	2T0692S0718							
AO	045	2T0692S0751							
AP	046	2R0692S0081							
AQ	047	2T0692S0753							
AR	049	2T0692S0749							
AS	054	2T0692S0748							
AT	055	2T0692S0733							
AU	060	2T0692S0059							
AV	064	2T0692S0712							
AW	074	2T0692S0720							
AX	076	2R0692S0026							
AY	077	2R0692S0025							
AZ	083	2T0692S0044							
BA	086	2T0692S0714							
BB	087	2T0692S0418							
BC	095	2T0692S0717							
BD	096	2T0692S0750							
BE	100	2T0692S0721							
BF	101	2T0692S0734							
BG	102	2T0692S0719							
BH	105	2T0692S0716							
BI	109	2T0692S0279							
BJ	110	2T0692S0323							
BK	111	2T0692S0149							
BL	112	2T0692S0333							
BM	113	2T0692S0605							
BN	114	2T0692S0122							
BO	115	2T0692S0234							
BP	116	2T0692S0078							
BQ	117	2T0692S0036							
BR	118	2T0692S0104							
BS	119	2T0692S0281							
BT	120	2T0692S0139							
BU	121	2T0692S0806							

