

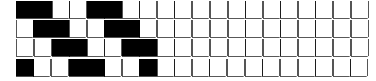
DISEGNATORE: FRANCO/GIOVANNI DESCR.: 2/70 55RPOL45WV / 2/69 53RPOL43WV4LY ARTICOLO/DISEGNO: 76.4390/D.546 DATA: 29-05-2023 STG: 76 DONNA/GARDENING T

Fili Totali: 4.552 Fili Fondo: 4.456 Cimosse: 48 x Parte Pettine: 60,00 / 4,00 H.telaio: 189,66 H.finita: 140

Trame/MT.: a telaio 2.500 Rientro: Contraz.tot: Peso/ml.teor: GG: Div: Finito: Armatura: 80002767

Disposizione Ordito: ( 0001 ) Disposizione Trama: ( 0001 ) **PASSATURA: „CNN SEGUENTE SU 8 LICCI**

1 A A 1 127,31 1 A A 1 148,30  
 1 1 127,31 1 1 148,30



ORDITO	A	B	C	D	E	F	G	H
CODICE	CATENA	NM 2/70 55%R-POLY 45						
1765	AA	2T0702S0378						
1766	AB	2T0702S1408						
1767	AC	2E0692Z0002						
1768	AD	2T0702S0605						
1769	AE	2T0702S0606						
1770	AF	2T0702S0607						
1771	AG	2T0702S0339						
1772	AH	2T0702S1409						
1773	AI	2T0702S0266						
1774	AL	2T0702S0067						
1775	AM	2T0702S0234						
1776	AN	2T0702S0122						
1777	AO	2T0702S1406						
1778	AP	2T0702S1407						
1779	AQ	2T0702S0149						
1780	AR	2T0702S0063						
1781	AS	2T0702S0323						
1782	AT	2T0702S0279						
1783	AU	2T0702S0340						
1784	AV	2T0702S0559						
1785	AZ	2T0702S0099						
1786	BA	2T0702S0001						
1787	BB	2T0702S0037						
1788	BC	2T0702S0418						
1789	BD	2T0702S0333						
1790	BF	2T0702S1278						
1791	BG	2T0702S0028						
1792	BH	2T0702S0108						
1793	BI	2T0702S0032						
1794	BL	2T0702S0055						
1795	BM	2T0702S0044						

TRAMA	A	B	C	D	E	F	G	H
CATENA	VAR.COL.	NM 2/69 53%R-POLY 43						
AA	001	2T0692S0378						
AB	002	2T0692S0608						
AC	003	2E0692Z0002						
AD	004	2T0692S0605						
AE	005	2T0692S0606						
AF	006	2T0692S0607						
AG	007	2T0692S0339						
AH	008	2T0692S0609						
AI	009	2T0692S0266						
AL	010	2T0692S0067						
AM	011	2T0692S0234						
AN	012	2T0692S0122						
AO	013	2T0692S0580						
AP	014	2T0692S0583						
AQ	015	2T0692S0149						
AR	016	2T0692S0063						
AS	017	2T0692S0323						
AT	018	2T0692S0279						
AU	019	2T0692S0340						
AV	020	2T0692S0559						
AZ	021	2T0692S0099						
BA	022	2T0692S0001						
BB	023	2T0692S0037						
BC	024	2T0692S0418						
BD	025	2T0692S0333						
AH	026	2T0692S0609						
BF	027	2T0692S0578						
BG	028	2T0692S0028						
BH	029	2T0692S0108						
BI	030	2T0692S0032						
BL	031	2T0692S0055						
BM	032	2T0692S0044						

