

DISEGNATORE: FRANCO/GIOVANNI DESCR.: NM 2/69 53 R-POLY 43 WOOL 4 LYCRA

ARTICOLO/DISEGNO: 78.3132/D.071

DATA: 20-05-2024

STG: 78 DONNA/GARDENING T

Fili Totali: 4.448 Fili Fondo: 4.376 Cimosse: 36 x Parte Pettine: 115,00 / 2,00 H.telaio: 190,26 H.finita: 140

Trame/M.T.: a telaio 2.300 Rientro: Contraz.tot: Peso/ml.teor: GG: Div: Finito: Armatura: 80003145

Disposizione Ordito: (016434)

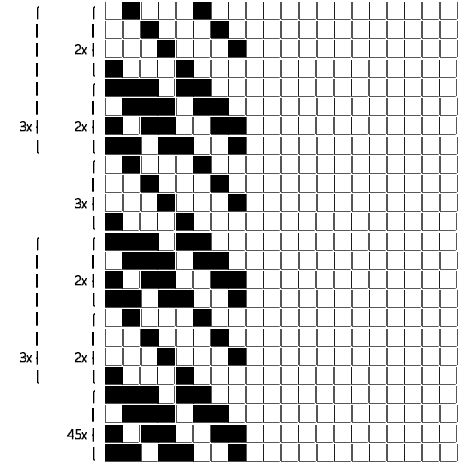
Disposizione Trama: (016099)

PASSATURA: „CBL TOT. 268 FILI SU 8 LICCI A CORPI

124	A	A	160	75,73	180	A
8	B	B	60	28,40	8	B
8	C	C	48	22,72	8	C
12	B				12	B
8	C				8	C
8	B				8	B
36	A				8	B
268			268	126,85	288	

180	A	A	180	85,53
8	B	B	60	28,51
8	C	C	48	22,81
12	B			
8	C			
8	B			
288			288	136,85

A	180	85,53
B	60	28,51
C	48	22,81
	288	136,85



ORDITO	A	B	C	D	E	F	G	H
CODICE	CATENA	NM 2/69 53 R-POLY 43	NM 2/69 53 R-POLY 43	NM 2/69 53 R-POLY 43				
1359	AA	2T0692S0340	2T0692S0001	2T0692S0712				
1360	AB	2T0692S0763	2T0692S0122	2T0692S0720				
1361	AC	2T0692S0762	2T0692S0001	2T0692S0339				
1362	AD	2T0692S0605	2T0692S0001	2T0692S0078				
1363	AE	2R0692S0023	2T0692S0001	2E0692S0005				

TRAMA	A	B	C	D	E	F	G	H
CATENA	VAR.COL.	NM 2/69 53 R-POLY 43	NM 2/69 53 R-POLY 43	NM 2/69 53 R-POLY 43				
AA	001	2T0692S0340	2T0692S0001	2T0692S0712				
AB	002	2T0692S0763	2T0692S0122	2T0692S0720				
AC	003	2T0692S0762	2T0692S0001	2T0692S0339				
AD	005	2T0692S0605	2T0692S0001	2T0692S0078				
AE	007	2R0692S0023	2T0692S0001	2E0692S0005				

