

Fili Totali: 4.448 Fili Fondo: 4.376 Cimosse: 36 x Parte Pettine: 115,00 / 2,00 H.telaio: 193,39 H.finita: 140

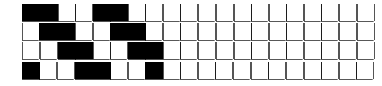
Trame/MT.: a telaio 2.300 Rientro: Contraz.tot: Peso/ml.teor: GG: Div: Finito: Armatura: 8000072

Disposizione Ordito: (014026)

Disposizione Trama: (014027)

PASSATURA: „CRV SEGUENTE SU 8 LICCI

4 A	A 72	63,42	4 A	x 9	A 80	69,46
4 B	B 36	31,71	4 B		B 40	34,73
4 A	C 32	28,19	4 A		C 36	31,26
4 C	D 4	3,52	4 C		D 4	3,47
4 A			4 A		160	138,92
4 B	144	126,84	4 B			
4 A			4 A			
4 D			4 D			
4 A			4			
4 B			160			
4 A						
4 D						
4 A						
4 B						
4 A						
4 C						
144						



ORDITO	A	B	C	D	E	F	G	H
CODICE	CATENA	NM 2/69 53 R-POLY 43	NM 2/69 53 R-POLY 43	NM 2/69 53 R-POLY 43	NM 2/69 53 R-POLY 43			
0976	AA	2T0692S0718	2T0692S0001	2T0692S0717	2T0692S0712			
0977	AB	2T0692S0712	2T0692S0001	2R0692S0023	2T0692S0717			
0979	AC	2R0692S0024	2T0692S0340	2R0692S0025	2T0692S0717			
0978	AD	2T0692S0712	2T0692S0001	2T0692S0751	2T0692S0339			
0974	AE	2T0692S0340	2T0692S0001	2R0692S0024	2T0692S0234			
0975	AF	2E0692S0005	2T0692S0001	2T0692S0078	2T0692S0720			

TRAMA	A	B	C	D	E	F	G	H
CATENA	VAR.COL.	NM 2/69 53 R-POLY 43	NM 2/69 53 R-POLY 43	NM 2/69 53 R-POLY 43	NM 2/69 53 R-POLY 43			
AE	005	2T0692S0340	2T0692S0001	2R0692S0024	2T0692S0234			
AF	014	2E0692S0005	2T0692S0001	2T0692S0078	2T0692S0720			
AA	015	2T0692S0718	2T0692S0001	2T0692S0717	2T0692S0712			
AB	016	2T0692S0712	2T0692S0001	2R0692S0023	2T0692S0717			
AD	017	2T0692S0712	2T0692S0001	2T0692S0751	2T0692S0339			
AC	018	2R0692S0024	2T0692S0340	2R0692S0025	2T0692S0717			

