

Fili Totali: 4.448 Fili Fondo: 4.376 Cimosse: 36 x Parte Pettine: 115,00 / 2,00 H.telaio: 193,39 H.finita: 140

Trame/M.T.: a telaio 2.300 Rientro: Contraz.tot: Peso/ml.teor: GG: Div: Finito: Armatura: 12004663

Disposizione Ordito: (021100)

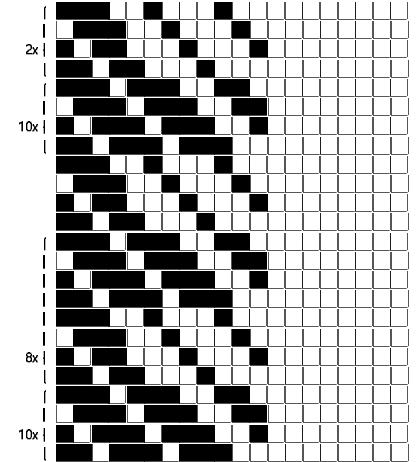
Disposizione Trama: (021099)

PASSATURA: „CUB TOT. 156 FILI A CORPI SU 12 LICCI

8	E	A	40	32,52
1	A	B	20	16,26
2	B	C	20	16,26
2	A	D	32	26,02
2	F	E	8	6,50
1	A	F	36	29,27
4	C		156	126,83
4	D			
4	F			
4	D			
4	C			
4	D			
4	F			
4	D			
4	C			
1	A			
2	B			
2	A			
2	F			
1	A			
156				

1	A	x 5
2	B	
2	A	
2	F	
1	A	
4	C	x 2
4	D	
4	F	
4	D	
4	C	
4	D	x 2
4	F	
4	D	
4	C	
1	A	x 5
2	B	
2	A	
2	F	
1	A	
8	E	
156		

A	40	35,62
B	20	17,81
C	20	17,81
D	32	28,50
E	8	7,12
F	36	32,06
156		138,92



ORDITO	A	B	C	D	E	F	G	H
CODICE	CATENA	NM 2/69 53 R-POLY 43	NM 2/69 53 R-POLY 43	NM 2/69 53 R-POLY 43	NM 2/69 53 R-POLY 43	NM 2/69 53 R-POLY 43	NM 2/69 53 R-POLY 43	
0963	AA	2T0692S0712	2T0692S0001	2T0692S0122	2T0692S0712	2T0692S0719	2T0692S0751	
0964	AB	2E0692S0005	2T0692S0001	2T0692S0001	2E0692S0005	2T0692S0328	2T0692S0210	
0965	AC	2E0692S0005	2T0692S0001	2T0692S0001	2E0692S0005	2T0692S0037	2T0692S0751	
0966	AD	2R0692S0024	2T0692S0210	2T0692S0210	2R0692S0024	2R0692S0024	2T0692S0328	

TRAMA	A	B	C	D	E	F	G	H
CATENA	VAR.COL.	NM 2/69 53 R-POLY 43	NM 2/69 53 R-POLY 43	NM 2/69 53 R-POLY 43	NM 2/69 53 R-POLY 43	NM 2/69 53 R-POLY 43	NM 2/69 53 R-POLY 43	
AA	001	2T0692S0712	2T0692S0001	2T0692S0122	2T0692S0712	2T0692S0719	2T0692S0751	
AB	002	2E0692S0005	2T0692S0001	2T0692S0001	2E0692S0005	2T0692S0328	2T0692S0210	
AC	003	2E0692S0005	2T0692S0001	2T0692S0001	2E0692S0005	2T0692S0037	2T0692S0751	
AD	004	2R0692S0024	2T0692S0210	2T0692S0210	2R0692S0024	2R0692S0024	2T0692S0328	

