

Fili Totali: 4.116 Fili Fondo: 4.056 Cimose: 30 x Parte Pettine: 70,00 / 3,00 H.telaio: 196,00 H.finita: 140

Trame/MT.: a telaio 2.200 Rientro: Contraz.tot: Peso/ml.teor: GG: Div: Finito: Armatura: 60000081

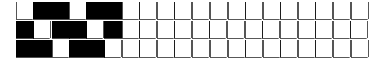
Disposizione Ordito: ( 017790 )

Disposizione Trama: ( 0001 )

PASSATURA: „CTO SEGUENTE SU 6 LICCI

27	A	A	27	105,81	1	A
3	B	B	3	11,76	1	
30			30	117,57		

A	1	134,55
	1	134,55



ORDITO	A	B	C	D	E	F	G	H
CODICE	CATENA	NM 2/69 53 R-POLY 43	NM 2/69 53 R-POLY 43					
1109	AA	2T0692S0340	2R0692S0025					
1110	AB	2T0692S0001	2T0692S0340					
1111	AC	2T0692S0731	2T0692S0340					
1112	AD	2T0692S0122	2T0692S0340					
1113	AE	2T0692S0752	2E0692S0005					
1115	AF	2R0692S0024	2R0692S0026					
1116	AG	2T0692S0713	2R0692S0024					
1117	AH	2T0692S0605	2T0692S0234					
1118	AI	2T0692S0559	2R0692S0023					
1121	AJ	2T0692S0418	2T0692S0720					
1122	AK	2R0692S0025	2T0692S0001					
1123	AL	2T0692S0752	2T0692S0712					
1119	AM	2R0692S0025	2R0692S0023					
1120	AN	2T0692S0559	2R0692S0025					
1124	AP	2T0692S0716	2T0692S0731					
1125	AR	2T0692S0078	2T0692S0001					
1126	AS	2R0692S0024	2T0692S0734					
1127	AT	2T0692S0122	2T0692S0339					
1114	AZ	2R0692S0024	2T0692S0340					

TRAMA	A	B	C	D	E	F	G	H
CATENA	VAR.COL.	NM 2/69 53 R-POLY 43						
AA	001	2T0692S0340						
AB	004	2T0692S0001						
AC	005	2T0692S0731						
AD	006	2T0692S0122						
AE	007	2T0692S0752						
AZ	008	2R0692S0024						
AF	010	2R0692S0024						
AG	018	2T0692S0713						
AH	019	2T0692S0605						
AI	020	2T0692S0559						
AM	023	2R0692S0025						
AN	024	2T0692S0559						
AJ	025	2T0692S0418						
AK	033	2R0692S0025						
AL	034	2T0692S0752						
AP	035	2T0692S0716						
AR	036	2T0692S0078						
AS	037	2R0692S0024						
AT	038	2T0692S0122						

