

DISEGNATORE: FRANCO/GIOVANNI DESCR.: 2/69 53 R-PET 43 WOOL 4 LYCRA

ARTICOLO/DISEGNO: 78.3554/D.353

DATA: 29-01-2025 STG: 78 DONNA/GARDENING T

Fili Totali: 5.592 Fili Fondo: 5.472 Cimosse: 60 x Parte Pettine: 72,50 / 4,00 H.telaio: 188,69 H.finita: 140

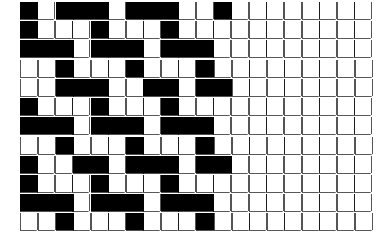
Trame/M.T.: a telaio 2.900 Rientro: Contraz.tot: Peso/ml.teor: GG: Div: Finito: Armatura: 12004658

Disposizione Ordito: (0001)

Disposizione Trama: (0001)

PASSATURA: „BQQ SEGUENTE SU 12 LICCI

1 A 1 158,61 1 A A 1 171,22
 1 1 158,61 1 1 171,22



ORDITO	A	B	C	D	E	F	G	H
CODICE	CATENA	NM 2/69 53 R-POLY 43						
2676	AA	2T0692S0340						
2677	AB	2T0692S0559						
2678	AC	2T0692S0732						
2679	AD	2T0692S0001						
2680	AE	2R0692S0024						
2681	AF	2T0692S0731						
2682	AG	2T0692S0713						
2683	AH	2R0692S0022						
2684	AI	2T0692S0752						
2685	AJ	2T0692S0037						
2686	AK	2T0692S0715						
2687	AL	2T0692S0339						
2688	AM	2T0692S0718						
2689	AN	2T0692S0751						
2690	AO	2T0692S0753						
2691	AP	2T0692S0749						
2692	AQ	2T0692S0748						
2693	AR	2T0692S0733						
2694	AS	2T0692S0059						
2695	AT	2T0692S0712						
2696	AU	2T0692S0720						
2697	AV	2R0692S0026						
2698	AW	2R0692S0025						
2699	AX	2T0692S0044						
2700	AY	2T0692S0714						
2701	AZ	2T0692S0418						
2702	BA	2T0692S0717						
2703	BB	2T0692S0750						
2704	BC	2T0692S0734						
2705	BD	2T0692S0719						
2706	BE	2T0692S0716						
2707	BF	2T0692S0279						
2708	BG	2T0692S0323						
2709	BH	2T0692S0149						

NOTE ARTICOLO: RIPORTATO DA STG. 76 x(000030)

NOTE FINISSAGGIO: BISTRETCH

Art.riportato originale 72.3554/D.353, 72.4754/C.353, 74.3554/D.353, 76.3554/D.353

DISEGNATORE: FRANCO/GIOVANNI DESCR.: 2/69 53 R-PET 43 WOOL 4 LYCRA

ARTICOLO/DISEGNO: 78.3554/D.353

DATA: 29-01-2025

STG: 78 DONNA/GARDENING T

2710	BI	2T0692S0333							
2711	BJ	2T0692S0605							
2712	BK	2T0692S0122							
2713	BL	2T0692S0234							
2714	BM	2T0692S0078							
2715	BN	2T0692S0036							
2716	BO	2T0692S0104							
2717	BP	2T0692S0281							
2718	BQ	2T0692S0139							

TRAMA		A	B	C	D	E	F	G	H
CATENA	VAR.COL.	NM 2/69 53 R-POLY 43							
AA	002	2T0692S0340							
AB	003	2T0692S0559							
AC	005	2T0692S0732							
AD	013	2T0692S0001							
AE	015	2R0692S0024							
AF	016	2T0692S0731							
AG	017	2T0692S0713							
AH	024	2R0692S0022							
AI	025	2T0692S0752							
AJ	034	2T0692S0037							
AK	037	2T0692S0715							
AL	038	2T0692S0339							
AM	039	2T0692S0718							
AN	045	2T0692S0751							
AO	047	2T0692S0753							
AP	049	2T0692S0749							
AQ	054	2T0692S0748							
AR	055	2T0692S0733							
AS	060	2T0692S0059							
AT	064	2T0692S0712							
AU	074	2T0692S0720							
AV	076	2R0692S0026							
AW	077	2R0692S0025							
AX	083	2T0692S0044							
AY	086	2T0692S0714							
AZ	087	2T0692S0418							
BA	095	2T0692S0717							
BB	096	2T0692S0750							
BC	101	2T0692S0734							
BD	102	2T0692S0719							
BE	105	2T0692S0716							
BF	109	2T0692S0279							
BG	110	2T0692S0323							
BH	111	2T0692S0149							
BI	112	2T0692S0333							
BJ	113	2T0692S0605							
BK	114	2T0692S0122							
BL	115	2T0692S0234							
BM	116	2T0692S0078							
BN	117	2T0692S0036							
BO	118	2T0692S0104							
BP	119	2T0692S0281							
BQ	120	2T0692S0139							

