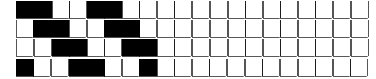


Fili Totali: 4.448 Fili Fondo: 4.376 Cimosse: 36 x Parte Pettine: 115,00 / 2,00 H.telaio: 193,39 H.finita: 140

Trame/MT.: a telaio 2.300 Rientro: Contraz.tot: Peso/ml.teor: GG: Div: Finito: Armatura: 80000072

Disposizione Ordito: ( 0001 ) Disposizione Trama: ( 0001 ) **PASSATURA: „CRV SEGUENTE SU 8 LICCI**

1 A A 1 126,84 1 A A 1 138,93  
 1 1 126,84 1 1 138,93



ORDITO	A	B	C	D	E	F	G	H
CODICE	CATENA	NM 2/69 53 R-POLY 43						
0238	AA	2T0692S0340						
0239	AB	2T0692S0559						
0240	AC	2T0692S0794						
0241	AD	2T0692S0732						
0242	AE	2T0692S0001						
0243	AF	2R0692S0024						
0244	AG	2T0692S0731						
0245	AH	2T0692S0713						
0246	AI	2R0692S0022						
0247	AJ	2T0692S0752						
0248	AK	2T0692S0037						
0249	AL	2T0692S0715						
0250	AM	2T0692S0339						
0251	AN	2T0692S0718						
0252	AO	2T0692S0751						
0253	AP	2R0692S0081						
0254	AQ	2T0692S0753						
0255	AR	2T0692S0749						
0256	AS	2T0692S0748						
0257	AT	2T0692S0733						
0258	AU	2T0692S0059						
0259	AV	2T0692S0712						
0260	AW	2T0692S0781						
0261	AX	2T0692S0720						
0262	AY	2R0692S0026						
0263	AZ	2R0692S0025						
0264	BA	2T0692S0044						
0265	BB	2T0692S0714						
0266	BC	2T0692S0418						
0267	BD	2T0692S0717						
0268	BE	2T0692S0750						
0269	BF	2T0692S0721						
0270	BG	2T0692S0734						
0271	BH	2T0692S0719						
0272	BI	2T0692S0716						
0273	BJ	2T0692S0279						
0274	BK	2T0692S0323						
0275	BL	2T0692S0149						
0276	BM	2T0692S0333						
0277	BN	2T0692S0605						

0278	BO	2T0692S0122							
0279	BP	2T0692S0234							
0280	BQ	2T0692S0078							
0281	BR	2T0692S0036							
0282	BS	2T0692S0104							
0283	BT	2T0692S0281							
0284	BU	2T0692S0139							
0285	BV	2T0692S0806							
0286	BW	2T0692S0850							
0287	BX	2T0692S0762							
0288	BY	2R0692S0067							
0289	BZ	2R0692S0023							

TRAMA		A	B	C	D	E	F	G	H
CATENA	VAR.COL.	NM 2/69 53 R-POLY 43							
AA	002	2T0692S0340							
AB	003	2T0692S0559							
AC	004	2T0692S0794							
AD	005	2T0692S0732							
AE	013	2T0692S0001							
AF	015	2R0692S0024							
AG	016	2T0692S0731							
AH	017	2T0692S0713							
AI	024	2R0692S0022							
AJ	025	2T0692S0752							
AK	034	2T0692S0037							
AL	037	2T0692S0715							
AM	038	2T0692S0339							
AN	039	2T0692S0718							
AO	045	2T0692S0751							
AP	046	2R0692S0081							
AQ	047	2T0692S0753							
AR	049	2T0692S0749							
AS	054	2T0692S0748							
AT	055	2T0692S0733							
AU	060	2T0692S0059							
AV	064	2T0692S0712							
AW	065	2T0692S0781							
AX	074	2T0692S0720							
AY	076	2R0692S0026							
AZ	077	2R0692S0025							
BA	083	2T0692S0044							
BB	086	2T0692S0714							
BC	087	2T0692S0418							
BD	095	2T0692S0717							
BE	096	2T0692S0750							
BF	100	2T0692S0721							
BG	101	2T0692S0734							
BH	102	2T0692S0719							
BI	105	2T0692S0716							
BJ	109	2T0692S0279							
BK	110	2T0692S0323							
BL	111	2T0692S0149							
BM	112	2T0692S0333							
BN	113	2T0692S0605							
BO	114	2T0692S0122							
BP	115	2T0692S0234							
BQ	116	2T0692S0078							
BR	117	2T0692S0036							
BS	118	2T0692S0104							
BT	119	2T0692S0281							
BU	120	2T0692S0139							
BV	121	2T0692S0806							
BW	122	2T0692S0850							
BX	123	2T0692S0762							
BY	124	2R0692S0067							

DISEGNATORE: FRANCO/GIOVANNI DESCR.: NM 2/69 53 R-POLY 43 WOOL 4 LYCRA - UNITO + ( ARTICOLO/DISEGNO: **78.4905/D.333** DATA: 15-01-2025 STG: **78** DONNA/GARDENING T

BZ	125	2R0692S0023							
----	-----	-------------	--	--	--	--	--	--	--

