

Fili Totali: 4.448 Fili Fondo: 4.376 Cimosse: 36 x Parte Pettine: 115,00 / 2,00 H.telaio: 193,39 H.finita: 140

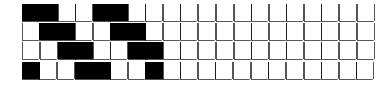
Trame/MT.: a telaio 2.300 Rientro: Contraz.tot: Peso/ml.teor: GG: Div: Finito: Armatura: 80000072

Disposizione Ordito: ( 014026 )

Disposizione Trama: ( 014027 )

PASSATURA: „CRV SEGUENTE SU 8 LICCI

|   |   |     |     |        |   |   |     |   |     |        |
|---|---|-----|-----|--------|---|---|-----|---|-----|--------|
| 4 | A | A   | 72  | 63,42  | 4 | A | x 9 | A | 80  | 69,46  |
| 4 | B | B   | 36  | 31,71  | 4 | B |     | B | 40  | 34,73  |
| 4 | A | C   | 32  | 28,19  | 4 | A |     | C | 36  | 31,26  |
| 4 | C | D   | 4   | 3,52   | 4 | C |     | D | 4   | 3,47   |
| 4 | A |     |     |        | 4 | A |     |   | 160 | 138,92 |
| 4 | B |     | 144 | 126,84 | 4 | B |     |   |     |        |
| 4 | A |     |     |        | 4 | A |     |   |     |        |
| 4 | D |     |     |        | 4 | D |     |   |     |        |
| 4 | A | x 7 |     |        | 4 | A |     |   |     |        |
| 4 | B |     |     |        | 4 | B |     |   |     |        |
| 4 | A |     |     |        | 4 | A |     |   |     |        |
| 4 | C |     |     |        | 4 | C |     |   |     |        |
|   |   |     | 144 |        |   |   | 160 |   |     |        |



| ORDITO | A      | B                    | C                    | D                    | E                    | F | G | H |
|--------|--------|----------------------|----------------------|----------------------|----------------------|---|---|---|
| CODICE | CATENA | NM 2/69 53 R-POLY 43 | NM 2/69 53 R-POLY 43 | NM 2/69 53 R-POLY 43 | NM 2/69 53 R-POLY 43 |   |   |   |
| 0415   | AA     | 2T0692S0718          | 2T0692S0001          | 2T0692S0717          | 2T0692S0712          |   |   |   |
| 0416   | AB     | 2T0692S0712          | 2T0692S0001          | 2R0692S0023          | 2T0692S0717          |   |   |   |
| 0418   | AC     | 2R0692S0024          | 2T0692S0340          | 2R0692S0025          | 2T0692S0717          |   |   |   |
| 0417   | AD     | 2T0692S0712          | 2T0692S0001          | 2T0692S0751          | 2T0692S0339          |   |   |   |
| 0413   | AE     | 2T0692S0340          | 2T0692S0001          | 2R0692S0024          | 2T0692S0234          |   |   |   |
| 0414   | AF     | 2E0692S0005          | 2T0692S0001          | 2T0692S0078          | 2T0692S0720          |   |   |   |

| TRAMA  | A        | B                    | C                    | D                    | E                    | F | G | H |
|--------|----------|----------------------|----------------------|----------------------|----------------------|---|---|---|
| CATENA | VAR.COL. | NM 2/69 53 R-POLY 43 | NM 2/69 53 R-POLY 43 | NM 2/69 53 R-POLY 43 | NM 2/69 53 R-POLY 43 |   |   |   |
| AE     | 005      | 2T0692S0340          | 2T0692S0001          | 2R0692S0024          | 2T0692S0234          |   |   |   |
| AF     | 014      | 2E0692S0005          | 2T0692S0001          | 2T0692S0078          | 2T0692S0720          |   |   |   |
| AA     | 015      | 2T0692S0718          | 2T0692S0001          | 2T0692S0717          | 2T0692S0712          |   |   |   |
| AB     | 016      | 2T0692S0712          | 2T0692S0001          | 2R0692S0023          | 2T0692S0717          |   |   |   |
| AD     | 017      | 2T0692S0712          | 2T0692S0001          | 2T0692S0751          | 2T0692S0339          |   |   |   |
| AC     | 018      | 2R0692S0024          | 2T0692S0340          | 2R0692S0025          | 2T0692S0717          |   |   |   |

